

Life Cycle of the Pubic Louse



1 Egg

After mating, a female lays individual eggs (called nits), gluing them to the hair shafts.

After a week, the first instar nymph hatches and takes its first blood meal from a host.



2 First instar nymph

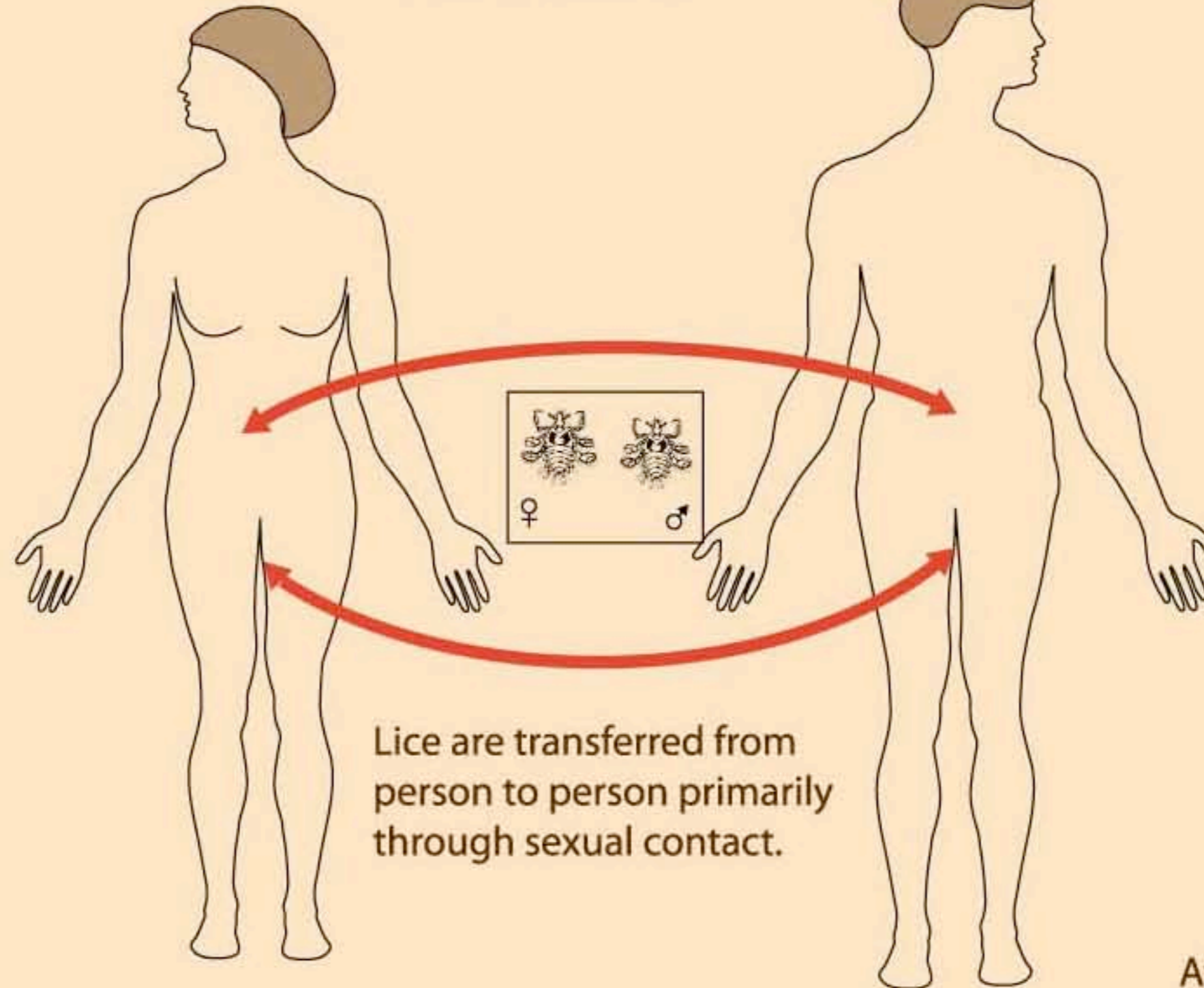


3 Second instar nymph



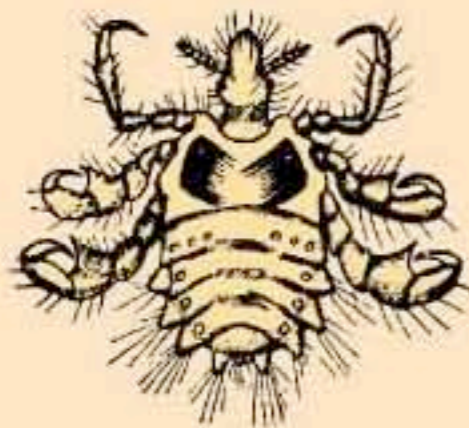
4 Third instar nymph

The adult lives from three to four weeks. The entire life cycle takes place on the host. If removed the louse will die within 48 hours.



Lice are transferred from person to person primarily through sexual contact.

After 13 to 17 days the nymph passes through all three nymphal stages and becomes an adult louse.



5 Adult louse.