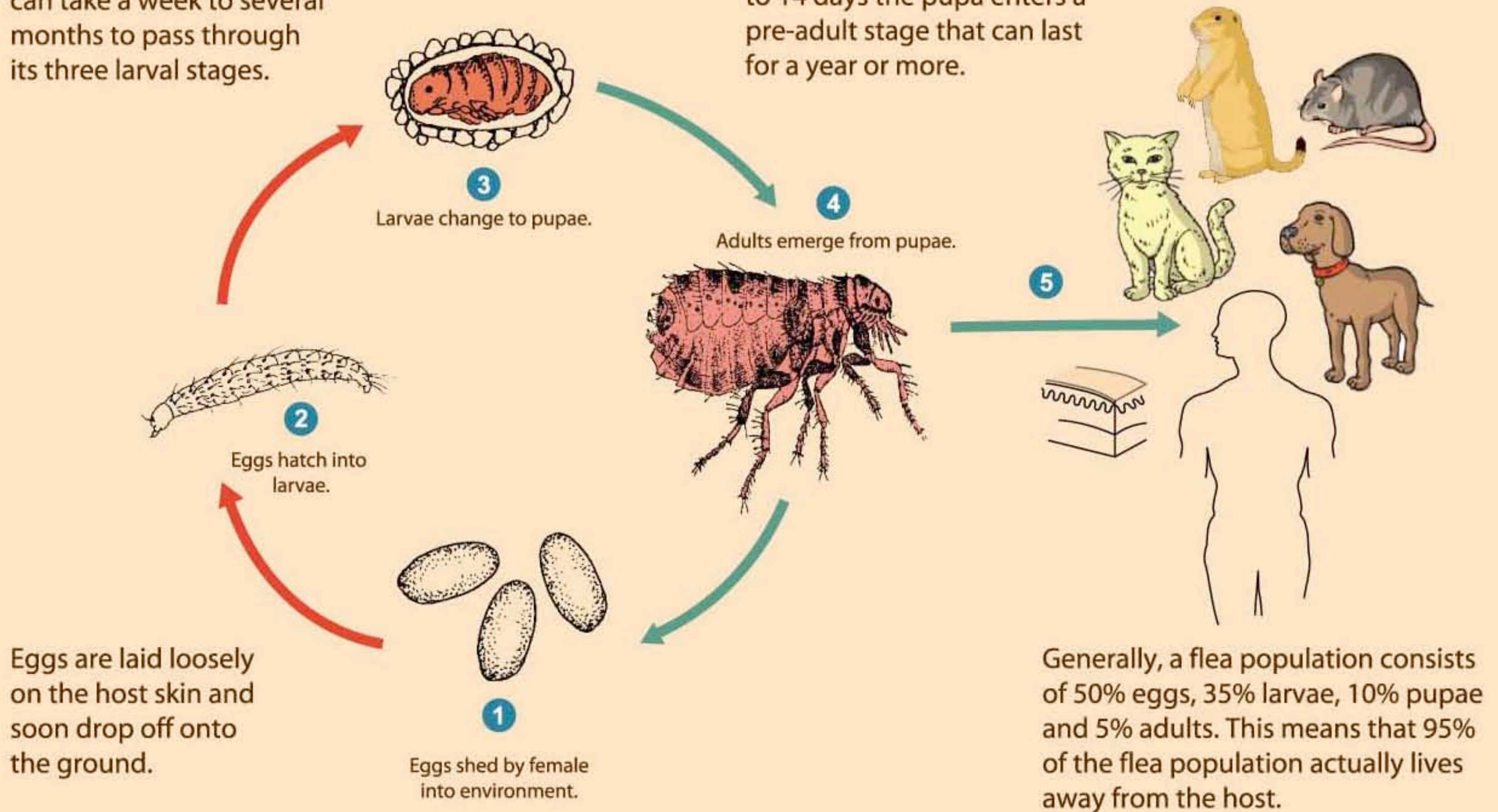


# Life Cycle of the Flea

After hatching, the larva can take a week to several months to pass through its three larval stages.

Once mature, the larva forms a cocoon. Inside this cocoon it becomes a pupa and after 5 to 14 days the pupa enters a pre-adult stage that can last for a year or more.



Eggs are laid loosely on the host skin and soon drop off onto the ground.

Generally, a flea population consists of 50% eggs, 35% larvae, 10% pupae and 5% adults. This means that 95% of the flea population actually lives away from the host.