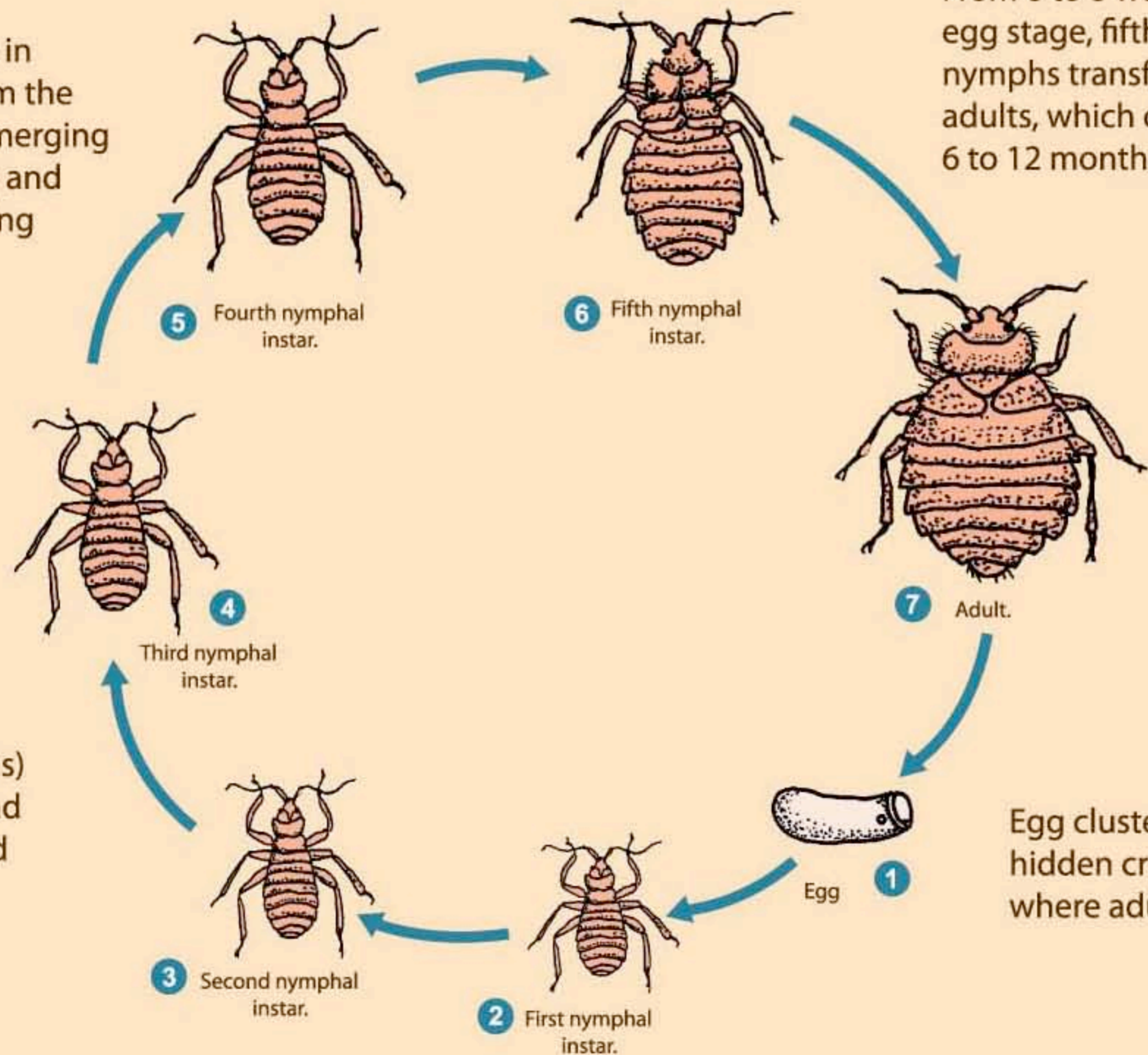


Life Cycle of the Bedbug

Nymphs and adults live in mixed groups away from the host during daylight, emerging at night to feed. Mating and egg laying occur in hiding places.



From 6 to 8 weeks after the egg stage, fifth instar nymphs transform into adults, which can live from 6 to 12 months.

Adult females need a blood meal to lay eggs. A female bug will produce up to 500 eggs in her lifetime.

Immature bugs (nymphs) look like small adults and need blood to grow and develop.

Egg clusters are attached to hidden cracks and crevices where adults hide.